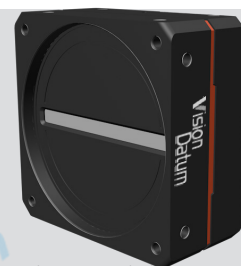




LEO 8K Line Scan Cameras

- 8K CMOS Sensor, 5μm / 7μm optional
- GigE, Cameralink data interface optional
- Support lossless image compression, TDI
- Rich ISP, support manual adjustment of Gamma correction,FFC, LUT, black level adjustment, etc.



Applied range • Defect Detection • Surface Patch Detection • Visual Positioning • Size Measuring • QR Code Reading • VR/AR • Logistics

Camera	LEO 8192G-L14gm	LEO 8192G-L14gc	LEO 8192G-L14gm-V2	LEO 8192G-L14gc-V2
Resolution [H*V]	8192 × 4	8192 × 6	8192 × 2	8192 × 3
Spectral Response	A		B	C
Sensor Type	CMOS			
Pixel Size [μm]	5 × 5		7 × 7	
Line Frequency [KHz]	14 kHz@Mono 8、 7 kHz@Mono 10/Mono 12、 9.4 kHz@Mono 10P/Mono 12P Burst Mode: 29.8 kHz@Mono 8、 20 kHz@Mono 10/Mono 12	14 kHz@ Bayer 8/ Mono 8、 7 kHz@Bayer 10/Mono 10、 4.7 kHz@RGB 8/BGR 8 Burst Mode: 40 kHz@Bayer 8、 20 kHz@Bayer 10、 14 kHz@RGB 8	14 kHz@Mono 8、 7 kHz@Mono 10/12 Burst Mode: 50 kHz@Mono 8/10/12	14.1 kHz@Mono 8/Bayer RG 8、 7.7 kHz@Bayer RG 10、 4.7 kHz@RGB 8/BGR 8 Burst Mode: 33 kHz@Mono 8/Bayer RG 8、 23.2 kHz@Bayer RG 10、 12.5 kHz@RGB 8/BGR 8
Exposure Time	3μs~10ms			
Dynamic Range	54.8dB		63.4dB	
Mono/Color	Mono	RGB real color	Mono	RGB real color
Image Format	Mono 8/10/10P/12/12P	Mono 8/10,Bayer RG 8/10, RGB 8,BGR 8	Mono8/10/12	Mono 8,Bayer RG 8/10, RGB 8,BGR 8
Interface	GigE			
Synchronization	Via hardware trigger、 software trigger or free run mode			
Housing Size	80 × 80 × 46.3mm (465g)(a)		76 × 76 × 46.7mm (400g)(b)	
Operating Temperature	-30~80 ° C (Storage), -20~55° C (Working)		-30~80 ° C (Storage), -20~50° C (Working)	
Lenses Mount	M72*0.75, BFL 12 mm			
Digital I/O	Bi-directional configurable I/O x 4, supports differential and single-ended IO signals;			
Power Input	DC 12-24V			
Power Consumption	12V @12.4W	12V @13W	12V @6.8W	12V @7.7W
Driver	iDatum or 3rd party GigE Vision Software			
Operating System	Windows, Linux			
Conformity	GigE Vision , GenICam			



Supports 2TDI

Camera	LEO 8K-80CM	LEO 8KT2-100CM	LEO 8K-34cc
Resolution [H*V]	8192 × 1	8192 × 2	8192 × 3
Spectral Response	D	B	C
Sensor Type	CMOS		
Pixel Size [μm]	7		
Line Frequency [KHz]	20 kHz(Base), 30 kHz(Medium), 80 kHz(Full)	20 kHz(Base), 40 kHz(Medium), 80 kHz(Full), 100 kHz(80-bit)	Full Resolution: 10.1 kHz(Base), 20.2 kHz(Medium), 33.7 kHz(80-bit) ROI(4140 resolution and below):66.6 kHz
Taps	2/4/8 Taps	2/4/8/10 Taps	1/2/10 Taps
Pixel Clock	40 MHz, 66 MHz, 80 MHz, 85 MHz		
Exposure Time	2μs~10ms	3μs~10ms	
Dynamic Range	64.7dB	63.4dB	
Mono/Color	Mono		RGB real color
Image Format	Mono8/10/12		Mono 8/12, RGB 8, BGR 8
Interface	CameraLink (SDR)		
Synchronization	Via hardware trigger、software trigger or free run mode		
Housing Size	76 × 76 × 42.1mm (320g)(c)		76 × 76 × 42.1mm (340g)(c)
Operating Temperature	-30~80 ° C (Storage), 0~55° C (Working)	-30~80 ° C (Storage), -20~55° C (Working)	
Lenses Mount	M72*0.75, BFL 12 mm		
Digital I/O	Bi-directional configurable I/O x 4, supports differential and single-ended IO signals; Camera Link provides IO		
Power Input	DC 12-24V		
Power Consumption	12V @5.8W	12V @9.8W	12V @9.9W
Driver	iDatum or Frame Grabber software meeting with CameraLink Protocol		
Operating System	Windows		
Conformity	Camera Link , GenICam		

Vision Datum
www.visiondatum.com



Camera	Supports 2/4TDI		Supports 2TDI	
	LEO 8KT4-100cm		LEO 8KT2-34cc	
Resolution [H*V]	8192 × 4		8192 × 6	
Spectral Response	A			
Sensor Type	CMOS			
Pixel Size [μm]	5			
Line Frequency [KHz]	20 kHz(Base), 40 kHz(Medium), 80 kHz(Full), 100 kHz(80-bit)		10.1 kHz(Base), 20.2 kHz(Medium), 33.7 (80-bit)	
Taps	2/4/8/10 Taps		1/2/10 Taps	
Pixel Clock	40 MHz, 66 MHz, 80 MHz, 85 MHz			
Exposure Time	3μs~10ms			
Dynamic Range	62dB			
Mono/Color	Mono		RGB real color	
Image Format	Mono8/10/12		RGB 8,BGR 8,Mono 8	
Interface	CameraLink (SDR)			
Synchronization	Via hardware trigger、software trigger or free run mode			
Housing Size	84 × 84 × 46.2mm (476g)(d)			
Operating Temperature	-30~80 ° C (Storage), -20~55° C (Working)			
Lenses Mount	M72*0.75, BFL 12 mm			
Digital I/O	Bi-directional configurable I/O x 4, supports differential and single-ended IO signals; Camera Link provides IO			
Power Input	DC 12-24V			
Power Consumption	12V @9.7W		12V @9.6W	
Driver	iDatum or Frame Grabber software meeting with CameraLink Protocol			
Operating System	Windows			
Conformity	Camera Link , GenICam			

www.visiondatum.com

Vision Datum
www.visiondatum.com



No.8, Xiyuan 9th Road West Lake District, Hangzhou 310030 China
Tel: 86-571-86888309, 86-571-86888307
Web: www.visiondatum.com Email: market@visiondatum.com



Camera	LEO 8KT4S-100cm	LEO 8KT4-34cc
Resolution [H*V]	8192 × 16	8192 × 12
Spectral Response	A	
Sensor Type	CMOS	
Pixel Size [μm]	5	
Line Frequency [KHz]	No light or 1 light mode: 20kHz(Base),40kHz(Medium),81kHz(Full),100kHz(80-bit) 2 light mode: 10kHz(Base),20kHz(Medium),40kHz(Full),50 kHz(80-bit) 3 light mode: 6kHz(Base),13kHz(Medium),27kHz(Full),33 kHz(80-bit) 4 light mode: 5kHz(Base),10kHz(Medium),20kHz(Full),25kHz(80-bit)	10 kHz(Base), 20 kHz(Medium), 34 kHz(80-bit)
Taps	2/4/8/10 Taps	1/2/4/10 Taps
Pixel Clock	40 MHz, 66 MHz, 80 MHz, 85 MHz	
Exposure Time	3μs~10ms	
Dynamic Range	57.8dB	62dB
Mono/Color	Mono	RGB real color
Image Format	Mono8/10/12	Mono 8/10,RGB
Interface	CameraLink (SDR)	
Synchronization	Via hardware trigger、 software trigger or free run mode	
Housing Size	84 × 84 × 89mm (900g)(e)	
Operating Temperature	-30~80 ° C (Storage), -20~60° C (Working)	
Lenses Mount	M72*0.75, BFL 12 mm	
Digital I/O	Bi-directional configurable I/O x 4, supports differential and single-ended IO signals; Camera Link provides IO	
Power Input	DC 24V	
Power Consumption	24V @22.9W	24V @20.5W
Driver	iDatum or Frame Grabber software meeting with CameraLink Protocol	
Operating System	Windows	
Conformity	Camera Link , GenICam	

Vision Datum
www.visiondatum.com

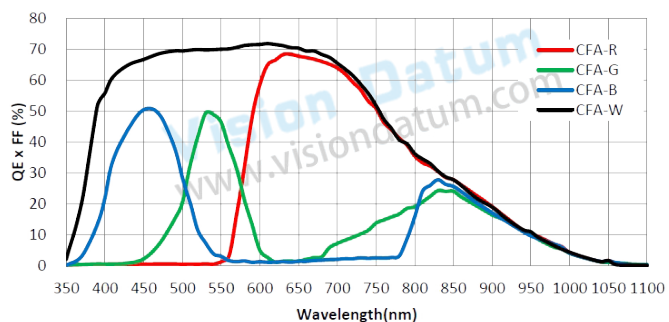


No.8, Xiyuan 9th Road West Lake District, Hangzhou 310030 China
Tel: 86-571-86888309, 86-571-86888307
Web: www.visiondatum.com Email: market@visiondatum.com

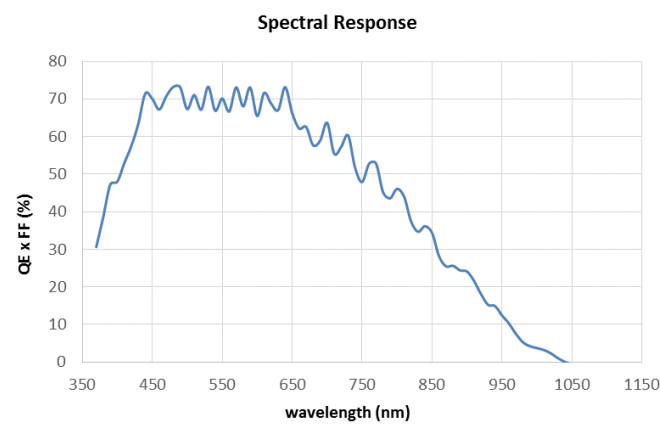


Spectral Response

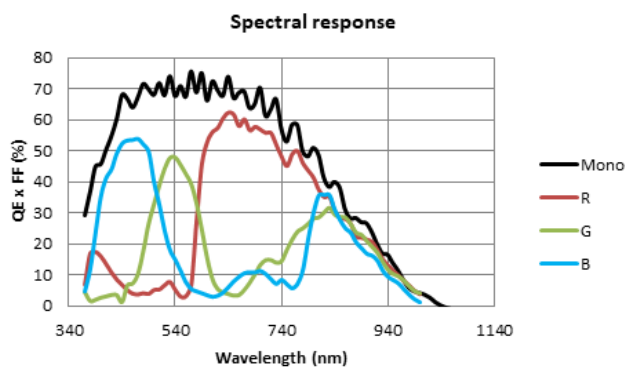
A



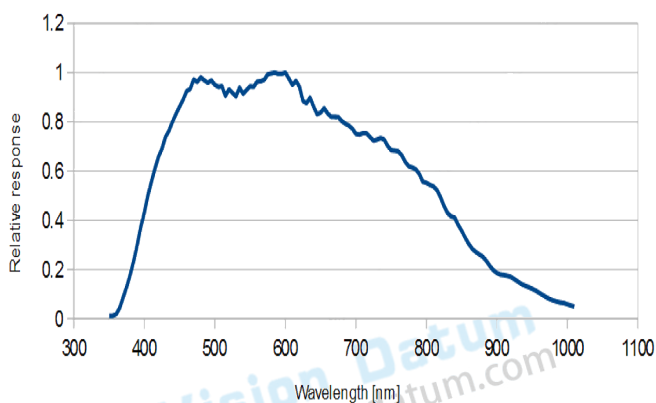
B



C



D



Vision Datum
www.visiondatum.com

Vision Datum
www.visiondatum.com



Dimensions

