

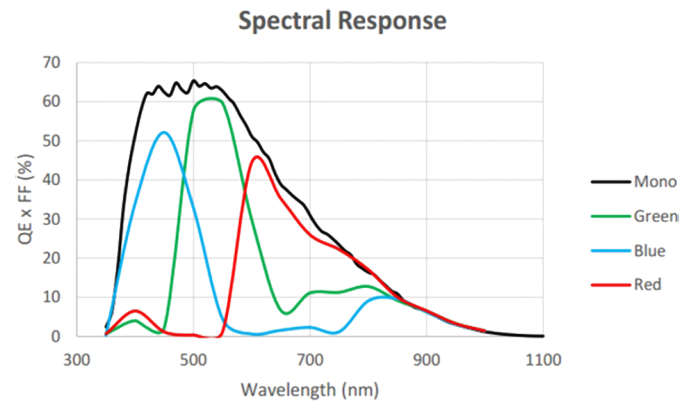
- 50MP resolution @15.5 fps
- 10GigE, compatible with GigE, supports long-distance data transmission
- Compatible with GigE Vision Protocol, GenICam Standard, and the third-party software based on these protocol and standard
- Support Windows
- Up to 1024 MB local memory for burst transmission and retransmission



Applied range • Defect Detection • Surface Patch Detection • Visual Positioning • Size Measuring • QR Code Reading • VR/AR • Logistics

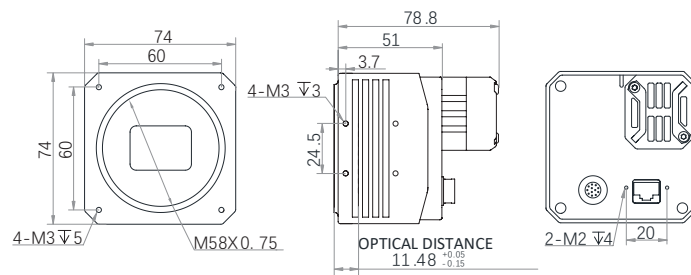
Camera	LEO 50MG-15Tgm/Tgc
Resolution [H*V]	7008 × 7000
Sensor	GMAX
Sensor Size	31.7 mm
Sensor Technology	Global, CMOS
Pixel Size [μm]	3.2 × 3.2
Frame Rate [fps]	15.5
Data Bit	12bit
Exposure Time	15μs~10s
Dynamic Range	66 dB
Mono/Color	Mono/Color
Image Format	Monochrome: Mono8/10/10p/12/12p Color: Mono 8/10/12,Bayer RG 8/10/10p/12/12p, YUV422Packed,YUV422_YUYV_Packed,RGB 8,BGR 8
Interface	10 GigE
Synchronization	Via hardware trigger、software trigger or free run mode
Programmable Control [ISP]	Image resolution、RGB gain、Exposure time、Contrast ratio、Gamma form、Image rollovers、Raw、LUT、Black level correction
Housing Size [l*w*h]	M58 (With fan):74 × 74 × 72.7 mm (550g) F-Mount (With fan):74 × 74 × 78.7 mm(600g)
Operating Temperature	-30~70 ° C (Storage), 0~50° C (Working)
Lenses Mount	M58, BFL 11.48 mm F-Mount, BFL 46.5mm
Digital I/O	Opto-isolated input x 1, opto-isolated output x 1, bi-directional custom non-isolated I/O x 1,RS232 x 1
Power Input	DC 9-24V
Power Consumption	12V @11W
Driver	LEO Series Camera Software Suite (iDatum) or 3rd party GigE Vision Software
Operating System	Windows
Conformity	GigE Vision,GenICam

Spectral Response



Dimensions

M58(With fan):



F-Mount(With fan):

