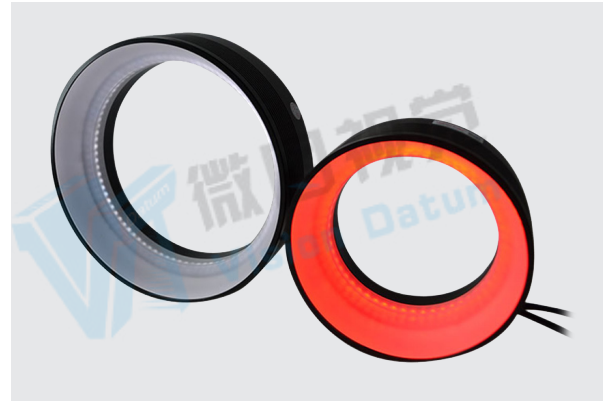


Shadowless Ring Illumination- Low Angle -LWR Series

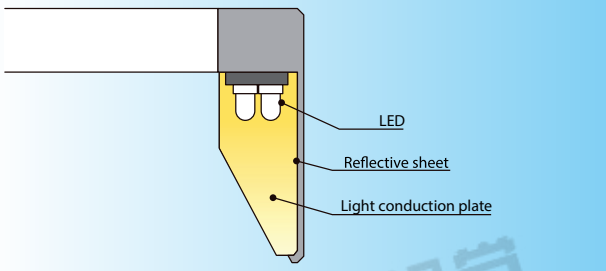
Low angle ring lights provide diffused lighting.

Features

- High density LED is distributed perpendicularly.
- Special material is used to diffuse light.
- Widespread use in inspection of object edge and scratches.



Cross-sectional View of an LWR-series Light



Applications

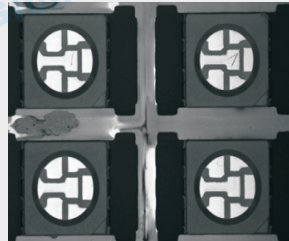
- Low angle uniform illumination and dark field lighting.
- Inspection of scratches on the workpiece.
- Plastic surface optical character recognition, capacitor character recognition.

Examples of Shadowless Low Angle Ring Light Images



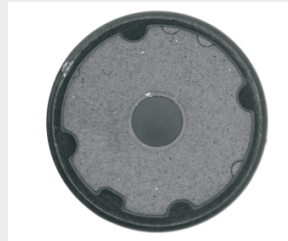
Lights:LWR50W

Imaging of characters on capacitance



Lights: LWR100W

Imaging of interior of LED

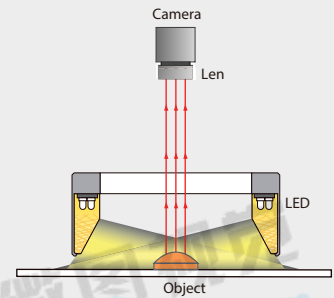


Lights:LWR180B

Imaging of rubber cushion

Illumination Structure

The object is illuminated from a low angle by uniform diffuse light through the light conduction plate.



Common Specifications

| | |
|--------------------------------|---|
| Input voltage | 24 VDC |
| Connector | SMR-03V-B |
| Wavelength range | Red: 620-630nm; Blue: 460-475nm; Green: 520-530nm; |
| Color temperature (white) | 6000-7500K |
| Operating environment (indoor) | Temperature: 0~40°C Humidity: 20% to 85% RH (with no condensation) |
| Life time | White:30,000hrs, Red: 60,000hrs (Depends on the operating environment, not a guarantee) |
| Case material | Aluminum alloy, Resin |

Explanation of Model Code

| | | |
|------------|----------------|---------|
| VT-LT2-LWR | 116 | (W/B/R) |
| Series | Outer Diameter | Color |

| Model No. | Optical spec. | Electrical specifications (GREEN / NIR / UV Accept custom) | | | Dimensions | | |
|---------------|--------------------|---|-------------------------|-----------------------------|---------------------|---------------------|----------------|
| | Light Area (mm) | Supply Voltage (v) | Power cons. (w) ● | Power cons. (w) ● ○ ● | Outer diam. (mm) | Inner diam. (mm) | Height (mm) |
| VT-LT2-LWR88 | Ø81 | 24 | 4.6 | 7.5 | 88 | 60 | 37 |
| VT-LT2-LWR100 | Ø94 | 24 | 4.9 | 7.8 | 100 | 73 | 40 |
| VT-LT2-LWR136 | Ø130 | 24 | 6.6 | 12.4 | 136 | 109 | 40 |
| VT-LT2-LWR180 | Ø174 | 24 | 9.5 | 13.8 | 180 | 153 | 40 |
| VT-LT2-LWR250 | Ø243 | 24 | 13.1 | 32.8 | 250 | 210 | 50 |

Dimension (mm)

