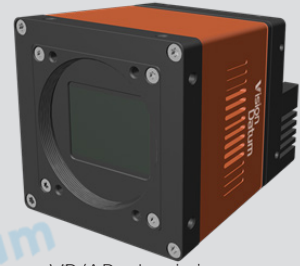


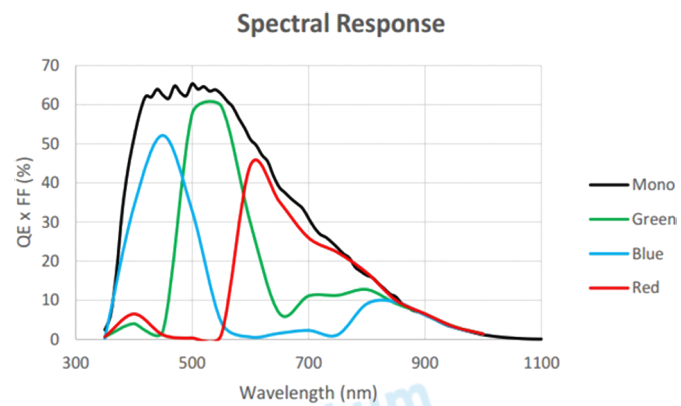
- 49MP @17.4 fps
- Adopts 10GigE interface and up to 10Gbps effective bandwidth
- Compatible with GigE Vision Protocol and the third-party software based on the protocol
- Support Windows operating platform
- Up to 1GB local memory for burst transmission and retransmission



Applied range • Defect Detection • Surface Patch Detection • Visual Positioning • Size Measuring • QR Code Reading • VR/AR • Logistics

Camera	Mars49MD-18Tgm/Tgc-M58
Resolution [H*V]	7008 × 7000
Sensor	/
Sensor Size [mm]	29.9 × 22.4
Sensor Technology	CMOS, Global
Pixel Size [μm]	3.2 × 3.2
Frame Rate [fps]	17.4
Data Bit	8bit
Exposure Time	16us-15s
Dynamic Range	66dB
Mono/Color	Mono/Color
Image Format	Mono:Mono8 Color:BayerRG8/BayerGB8
Interface	10 GigE
Synchronization	Via hardware trigger、software trigger or free run mode
Housing Size [l*w*h]	72.0 × 72.0 × 80.5 mm (600g) (Lens mount and rear housing connector not included)
Operating Temperature	-30~80 ° C (Storage), 0~50° C (Working)
Lenses Mount	M58 x 0.75, FBL 11.48±0.15
Digital I/O	Opto-isolated input x 3,opto-isolated output x 3, RS232 x 1
Power Input	DC 24V
Power Consumption	24V@ ≈ 20.16 W
Driver	Mars series camera software suite or third-party GigE Vision protocol software
Operating System	Windows
Conformity	GigE Vision, GenICam

Spectral Response



Dimensions

